

A WARM

WELCOME



Sea Fern

8 Kingston Garth, YO22 4UN



GET TO KNOW
SEA FERN

CONTENTS

- 01 - ABOUT THE COTTAGE
- 02 - MEET YOUR HOST
- 03 - CHECK-IN, CHECK-OUT
- 04 - EMERGENCY INFO
- 05 - FIRE SAFETY
- 06 - 07 HOUSE RULES & GUIDE
- 08 - WIFI
- 09 - GETTING AROUND
- 10 - THE KITCHEN
- 11 - TOP THINGS TO DO
- 12 - KIDS - SUMMER ACTIVITIES
- 13 - KIDS - WINTER ACTIVITIES
- 14 & 15 - PLACES TO EAT
- 16 to 19 - HOST TIPS on WALKING, BEACHES & CYCLING
- 20 - FACILITIES
- 21 - EXTRA FACILITIES
- 22 - BEFORE YOU LEAVE
- 23 - CHECK OUT CHECKLIST
- 24 - REVIEWS





ABOUT SEA FERN

Sea Fern is a spacious property situated within the pretty village of Fylingthorpe and within a mile of Robin Hood's Bay. A 20 minute walk over the fields will take you directly down to the beach. The attic rooms are wonderfully light and bright and the whole property has been recently renovated and the south facing patio is a real sun trap.

We are in the ideal location for walkers, cyclists and families wanting to explore the North York Moors National Park and the Yorkshire coast and beaches. The Cinder Path is just down the lane and you can store bikes securely in the garage.

enjoy

LOCATION:
Flingthorpe

BEDROOMS:
Three

NO. OF GUESTS:
Six

BATHROOMS:
Two

W
E
L
C
O
M
E



JILL HEATON

MEET YOUR HOST

SOME FACTS ABOUT JILL

- Started hosting in 2022.
- Keen cyclist, runner and walker.
- I love Robin Hood's Bay and plan to retire there.

07766041644 jill@seafern.co.uk

Dear Guest,

Welcome to Sea Fern. We are excited to have you stay.

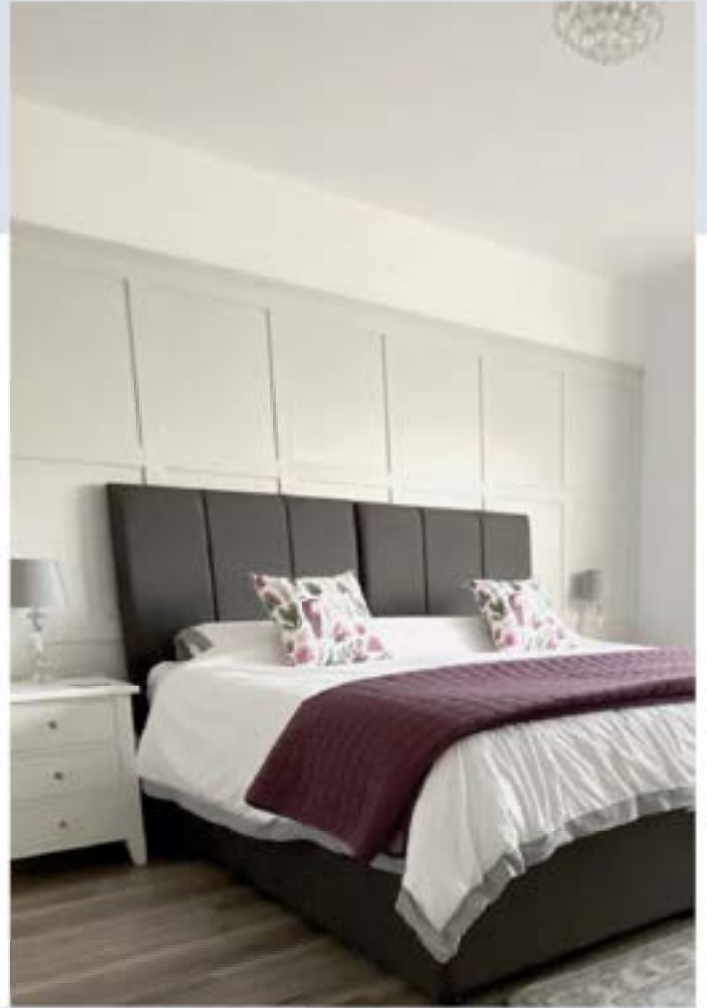
Sea Fern is very special to us. Believe it or not, it was a full renovation project in January 2022 and it has taken us a year to complete.

We started holidaying in and around Robin Hood's Bay more than 10 years ago, when our children were little. It's a great spot to explore the Yorkshire coast from and the whole area is beautiful. We have so many great memories attached to Robin Hood's Bay , and we are convinced that you will too.

In this guide, you will find lots of useful information that we have compiled carefully to help you make the most of your stay; from instructions on how to use the appliances, to recommendations for nearby restaurants and shopping areas. We have got it all covered. We hope that you enjoy the place as much as we do.

Have a great stay.

Sincerely,
Jill Heaton



CHECK-IN CHECK-OUT

4PM/10AM

Please contact us, if you require an early bag drop.



8 Kingston Garth, Fylingthorpe, YO22 4UN

Sea Fern is in Fylingthorpe. From Scarborough or Whitby just follow the signs for Fylingthorpe and Robin Hood's Bay on the A171.

EMERGENCY INFO

RESOURCES



Sea Fern Cottage

PHONE: 07766 041644

EMAIL: jill@seafern.co.uk



MEDICAL EMERGENCY

PHONE: 01947 899200 | 999 (In Case of emergency)

WHITBY COMMUNITY HOSPITAL - 8AM-8PM



PHARMACY

PHONE: 01947 603087

9 Mount Farm Close, Whitby YO22 4HJ



FIRE DEPARTMENT

PHONE: 999



COAST GUARD

PHONE: 01429 260306 7AM-6PM

HM COASTGUARD WHITBY

FIRE SAFETY

SEA FERN COTTAGE - 8 Kingston Garth, Fylingthorpe, YO22 4UN

In the event of a fire:

Please make your way to the nearest exit and call 999 using your mobile phone.

The emergency services will need to know the full address of the property in order to respond.

We recommend taking a photograph of this page with your phone on arrival.

The front door exit is the preferred exit for your safety.

If you are exiting into the garden you can ensure you are a safe distance from the property by accessing Middlewood Lane via the allotments through the back gate.



Means of escape:

1. It is advisable to close all doors at night for fire safety.
2. Take note of your nearest exit at the front and back of the house in case of fire.
3. For ease of exit, back doors are fitted with twist locks. However, for your security the front door is not fitted with a twist lock, therefore, we recommend that you leave the key in an agreed place near the door and make sure all guests know where it is in case of emergency.

Fire detection and alarms:

Interlinked smoke alarms are installed in the entrance hall, landing, living room, dining room and bedrooms and a heat alarm installed in the kitchen.

Lighting:

Torches are provided in each bedroom in case of power failure. These can be found in the bedside tables and should be used to illuminate your way to the nearest exit.

Fire fighting equipment:

You will find a multi-purpose fire extinguisher in the kitchen. This can be used on any type of fire including electrical fires. There is also a fire blanket in the kitchen.



HOUSE RULES

We kindly ask you to read our house rules carefully and keep them in mind during your stay.



**NO SMOKING or
VAPING**



NO CANDLES



NO SHOES



NOISE

Please respect the
neighbours



TIMING

Respect check in-
check out times



DISHES

Please notify us of
any breakages.



GUESTS

No unregistered
guests to sleep over.



PETS

Do not let dogs upstairs
or on the beds.



SUBSTANCES

No illegal items allowed
on the premises.

GETTING COMFORTABLE HOUSE GUIDE

ENJOY YOUR STAY



TV AND VIDEO

We don't subscribe to streaming services, but you can log into the smart TV Fire Stick with your Netflix or Amazon accounts (please don't forget to log out before you leave).



TEMPERATURE

Default temperature: 18 degrees

We have the heating on a timer in winter and it is switched off in the summer months. If you want to put it on at any time simply turn the dial clockwise until it reaches the desired temperature. Sea Fern is very well insulated and will heat up quickly.



LAUNDRY

We recommend: The quick sports cycle.

It takes just over an hour and is great for a quick wash and refresh of towels or salty clothing. If you use any of the dog blankets or dog towels please can you wash and dry them on the line or heated airer before you leave. Many thanks.



BINS

Blue bin: recycling

Green bin: normal waste

Bins are collected on Friday. If you are not sure which one is due for collection please leave both blue and green bins at the top of the drive on Thursday night if you are leaving the property on Friday. Many thanks.

WIFI

ENJOY YOUR STAY



Vodafone0D88AC
(note it's best to let you phone find this rather than typing it in (zero before the D)).



rffn y73E KmyL aMAX
(please note E,K,L,M and A are upper case)

Seafern does NOT have a subscription to Netflix or Amazon, but you can login and your your own account or create an account to pay for movies.

There is a DVD player and a selection of DVDs in the chest underneath the TV.

WIFI: the network name is: Vodafone0D88AC and The Password is:
rffn y73E KmyL aMAX



GETTING AROUND



ON FOOT

On Thorpe Bank you will find:
Fylingthorpe Stores (groceries),
Fylingdales Inn (pub) and a playground.
The beach at Robin Hood's Bay is also
within easy walking distance.



BIKES

You can get to Ravenscar and Whitby
within an hour by bike.
Bikes can be hired at:
<https://www.bayhire.co.uk/>
07477 167076



BUS

Buses to Scarborough and
Whitby are every half hour in
high season. The stops and
timetables are on Thorpe
Bank.



TAXI

Bay Private hire
01947 880603
www.bay-taxis.co.uk

PARKING

There is space for one car on the drive and one car on the road side. It is a shared drive, so we ask guests to park at the top, near the road, to allow our neighbour to park nearest the garages. Thank you.



THE KITCHEN

ENJOY THE KITCHEN

The kitchen has everything you need; fridge freezer, dishwasher, hob, oven, microwave and washing machine. There is also a heated clothes airer and and iron and an ironing board.

*If something is broken or not working, please let us know by texting 07766041644.
We will fix the problem as soon as possible.*

LOCAL TOP THINGS TO DO

ROBIN HOOD'S BAY



LEARN TO SURF

Surf club, in Whitby runs every day of the holidays for 4 days a week (Monday to Thursday) from 9.30am - 12pm. Book online early!

www.whitbysurf.co.uk

email: whitbysurfschool@gmail.com

PRICING

CHILD: £120 for 4 days surf school

CYCLE THE CINDER PATH

The Cinder Track, between Scarborough and Whitby, is a popular off road route through the North York Moors National Park. It is traffic free and there are stunning views along the coastal sections.

You can hire bikes at www.bayhire.co.uk PHONE:07477 167076

DAY BIKE HIRE PRICING

4 guests or more £34 per bike



SANDESEND

The beach at Sandsend is the prettiest on the East Yorkshire coast. When the sun is out, head to Sandsend!

PARKING

Mulgrave Estate, Lythe YO21 3RJ £5 all day

Lythe Bank, Sandsend, YO21 3TG £5 for up to 6 hours

ROCKPOOLING AT ROBIN HOOD'S BAY

Explore the fabulous rockpools at Robin Hood's Bay and identify shoreline creatures using a rock pool guide like this one priced at just £2 plus postage..

www.johnwalters.co.uk/publications/



LOCAL PLACES FOR KIDS

GREAT FOR SUMMER BREAKS



HORSE RIDING

Farsyde Farm is Walking distance from Sea Fern (Heidi on 07800962117). Experienced riders only. Small groups of capable riders can enjoy riding through fields, ancient woods, streams and miles of glorious moorland with 360 degrees panoramic views, with the sea nearly always in sight. Borrowby equestrian centre cater for all ages from 4 years and all abilities. Contact karenyeoman6@hotmail.com 07545259590



NORTH YORKSHIRE AQUA PARK

We recommend the "Wipeout" inflatable, with slides, swings, stepping stones, rockers, jumps and Balance beams!! However, you can also enjoy zip wire, climbing, paddleboarding and kayaking here!

PRICING

£18 per person per session - book online at:

<https://www.northyorkshirewaterpark.co.uk/activities/aqua-park/>



SURFING OR BODYBOARDING

we absolutely love body boarding and there are 2 body boards for kids in the garage for you to borrow during your stay. We recommend using these at Whitby or Sandsend when there is a lifeguard on duty.

PRICING

Lesson - FREE

Life guard times: 1st July – 3rd September 10am-6pm



BOATING AT RUSWARP

Row boat and kayak hire is available at Ruswarp. Established in 1874, people have been rowing on the idyllic River Esk for over a century.

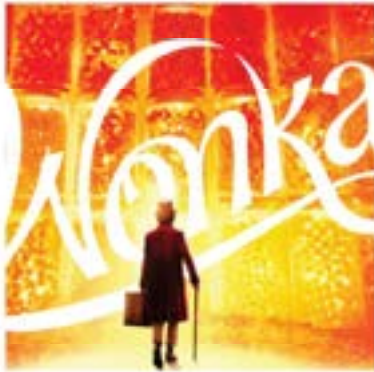
Book online at ruswarppleasureboats.co.uk

PRICING

Rowing Boats - £8 per adult and £3 per child for an hour.

LOCAL PLACES FOR KIDS

GREAT FOR WINTER BREAKS



CINEMA AT WHITBY PAVILION

The Whitby Pavilion Cinema is situated inside Whitby's West Cliff Victorian Theatre, in the historic port of Whitby, North Yorkshire. Since 2010 the cinema has been home to a wide and varied mix of the latest blockbusters including; traditional drama, thriller, family musicals and comedy. [Cinema Tickets](#).



SEA LIFE AQUARIUM

The SEA LIFE Scarborough aquarium is a magical underwater world where visitors can get close penguins, sharks, seals otters and octopus. You can also immerse yourself in a world of creepy crawlies, pythons and Poison Arrow Dart Frogs.

PRICING

Advanced tickets from £20 per person.

<https://www.visitsealife.com/scarborough/>



FOSSIL HUNTING SAFARI

Robin Hood's Bay is one of the best places to find fossils. Make sure you find the best fossils in a safe environment at with a professional guide. This 2.5 hour private fossil hunting safari is for up to 6 people!

PRICING

From £150 for up to 6 people

<https://yorkshirecoast.rocks/guided-tours/private-hire-tour-robin-hoods-bay/>



VISIT WHITBY ABBEY

Discover stories of saints, poets and Dracula as you explore soaring gothic ruins and take in the stunning sea views. Warm up in the indoor museum or pop to [Whitby Brewery](#) for a pizza lunch which is just next door.

PRICING

Approximatley - £29 for a family of 2 adults and 3 children.

PUB FOOD

PLACES TO EAT

ROBIN HOODS BAY



THE BAY HOTEL

No trip to Bay is complete without a meal at The Bay Hotel. Just off the beach the location is great for hungry rockpoolers. You can't book so get there early find a table and order at the bar! Dog and veggie friendly.

Ph- 01947 880278

Email- contact@bayhotel.info



FYLINGDALES INN

Really good pub grub a short walk from Sea Fern. The spacious restaurant and garden accommodates children and dogs. Try the Chicken Parmo if you're really hungry. It's a local speciality and is like a pizza on a chicken breast.

Ph- 01947 880433

Email- bookingsatthefylingdalesinn@gmail.com



SMUGGLERS

So cute and romantic, Smugglers is dimly lit with red twinkling lights. They offer naked burgers and pizzas and are dog friendly. They only take bookings in person, so pop in when you are at the beach and make a reservation.

Ph- 01947 880099

Email- info@smugglersrhb.co.uk



BRAMBLES BISTRO

A friendly family run restaurant offering a late brunch, a quick bite at lunch or a fantastic steak from the grill. Vegetarian and vegan options are available.

Ph- 01947 88 00 94

Email- hello@bramblesbistro.co.uk

FINE DINING RESTAURANTS

ROBIN HOODS BAY



THE VICTORIA HOTEL - ROBIN HOODS BAY

On a sunny day dining in the orangery at The Victoria Hotel overlooking Bay is hard to beat! The option to choose from their A la Carte menu or their regular menu makes this a great place to dine! ££

Ph- 01947 880205

<https://www.victoriarhb.com/contact/>



THE WHITE HORSE AND GRIFFIN - WHITBY

Whitby's Oldest Coaching Inn with a Gin Lounge and Fine Dining. Very traditional with a great fish offering. Exquisite flavours and cosy ambiance – a perfect blend of fine dining and fireside charm. ££

Ph-01947 604857

Email - info@whitehorseandgriffin.com



RAITHWAITE HALL - SANDSEND

The interiors at the Restaurant are light and contemporary. The focus is on all things local, seasonal and organic for any occasion and for any time of day. The food and environment are a little bit special. ££

Ph- 01947 [011947 661661](tel:011947661661)

Email-reservations@raithwaite.com



THE HOMESTEAD - GOATHLAND

Perfect for couples looking for an exceptional treat, with stunning views, outstanding service, and an intriguing menu. Featured in the Good Food Guide they received an overall rating of 'Very Good' for uniqueness and deliciousness. £££

[01947 896191](tel:01947896191)

enquiries@thehomesteadgoathland.com

THINGS TO DO

HOST RECOMMENDATION

1

WALKING

You can't beat walking along the coast on the Cleveland Way. We love this circular 6 mile route from Fylingthorpe to Hawsker and back along the coastal path.

<https://www.mudandrout.es.com/routes/robin-hoods-bay-circular-coastal-walk/>

2

BEACHES

On a cloudy day you can't beat Robin Hood's Bay for rockpooling and fossil hunting. On a sunny day a dip in the sea at Sandsend or Whitby would be our recommendation. We also love the pop up beach sauna

<https://www.whitbywellbeing.com/sauna-page> Book to ensure a place!

3

CYCLING

The Cinder Track is a 21 mile picturesque coastal route from Whitby to Scarborough. We like the 5 mile section from Fylingthorpe to Ravenscar the best, because its not too far for children. It might be up hill most of the way, but there's an ice cream shop at the top and then it's down hill all the way back. Join the Cinder Path 300m from Sea Fern along the lane past Middlewood Farm.

Check the blog on our website and like our facebook page for the latest events and activities we recommend in the area...

<https://www.facebook.com/seaferncottage/>

<https://www.seafern.co.uk/blog>

WALKING

ENJOY YOUR HIKING



EXPLORE THE AREA

It's always good to have a couple of walks that you can do without having to get in the car! This is our 2 mile, explore the area walk. From the back garden head through the allotment and pick up the foot path that takes you over the fields. Turn right onto the Cinder Path and pick up the foot path again that leads you all the way down to the beach. Head back through the Robin Hood's Bay to make it circular.



CLEVELAND WAY BITE-SIZED

This is a 6 mile bite-sized section of the Cleveland Way along the coast near Robin Hood's Bay. It starts off at Robin Hood's Bay, taking an inland route over towards Hawkser Bottom before returning along the coastal path. <https://www.mudandroutess.com/routes/robin-hoods-bay-circular-coastal-walk/>



BEACH WALK TO RAVENSCAR

When the tide is out it is possible to walk from Robin Hoods Bay to Ravenscar along the beach and back along the Cleveland Way or Cinder Path. This round trip is approximately 8-10 miles, so a packed lunch and hot drink or ice cream at the National Trust Cafe near Raven Hall is a welcome half way break. You will also get to see the seals at Ravenscar.



WHITBY TO FYLINGTHORPE

This 7-mile stretch of the Cleveland Way between Whitby and Robin Hood's Bay takes in some of the best of the North York Moors heritage coastline with a cliff-top path that looks out over the beautiful bays and beaches below. Take the bus to Whitby bus station, head over the swing bridge into the old town and climb the 199 steps to the Whitby Abbey. Pick up the Cleveland Way there.

BEACHES

ENJOY YOUR STAY



ROBIN HOOD'S BAY

Explore the fabulous rockpools at Robin Hood's Bay and identify shoreline creatures using a rock pool guide. It's also great for fossil hunting or just people watching on the quater deck with a coffee from the kiosk or fish and chips from Marion's.

SANDESEND

Perfect for young families, Sandsend has a inlet with a lazy river which is safe for young children to paddle and use dinghies. There is a life guard and a places to hire paddleboards and body boards. The cafe offers take away pizza.



WHITBY

Whitby Sands is also a life guard patrolled beach, perfect for bodyboarding, building sandcastles and learning to surf with Whitby Surf School. A picnic from Bothams is our perferred lunch on the beach when we are there.

SCARBOROUGH

Scarborough North Bay is around 30 minutes from Sea Fern. Spend the day and hire one of the pretty painted beach huts or take a stroll into the town or to Peasholm Park.



CYCLING

ENJOY YOUR STAY

CINDER PATH

The Cinder Track is a 21 mile picturesque coastal route from Whitby to Scarborough. It boasts fantastic views, secluded coves and access to visit local attractions, including Scarborough Castle, Whitby Abbey and the Captain Cook Memorial Museum. Join the Cinder Path 300m from Sea Fern along the road past Middlewood Farm.



DALBY FOREST

Whether you've just bought your first bike, or you're happy shredding through rock gardens, Dalby Forest offers a fantastic opportunity for natural cycling. Exploring this stunning forest on two wheels will leave you grinning from ear to ear.



ROBIN HOODS BAY TO BURNISTON

This beautiful 27 mile loop takes you into the dense forest lined lanes of Harwood Dale and back via Burniston and Cloughton. Experience stunning views across the spectacular North Sea at Ravenscar.

Call in at cycle-friendly cafes and pubs along the way.

There are 3 fab road routes for you to try in the documents section of our website. www.seafern.co.uk/documents.



DANBY LOOP VIA WHITBY

This challenging 44 mile ride starts takes you to Whitby and then passes through quiet villages like Ruswarp, Aislaby and Egton. Shorten the route to 27 miles by cutting back via Egton Bridge or head across moorland to the magnificent viewpoint of Danby Beacon. Your efforts are easily repaid by the view of the moors and the sea from the top, before descending to The Moors National Park Centre and on to the moorland village of Danby and returning via Grossmont. This is a very hilly ride!



YOUR STAY

FACILITIES

1

THE OVEN

Ensure the time is set for the oven to start. The left dial needs to be on the fan only symbol and the right dial sets the temperature.

2

FIRE

Press the lever down as far as it will go and hold it for 4 seconds then raise the lever to light the fire.

3

TV

The largest remote is for the TV, the smaller one is for streaming via a Fire Stick and the chunky one is just for the DVD player. We don't subscribe to Netflix or Amazon Prime ,but you can log in with your own account.

4

DOOR KEY

You can avoid loosing the door key by leaving it in the key safe when you go out. Please do not take the garage door key off the premises..

5

PATIO FURNITURE

The legs can be lifted on the coffee table to convert it into a dining table. The cushions are in the garage. The key is hanging next to the back door.

6

SHAVER POINT

There is a shaver socket in the downstairs mirror on the right hand side. This can be used for toothbrush chargers.



EXTRA FACILITIES



BOOKS

There are books for children and adults to borrow during your stay including cookery books and novels.

GAMES

We have a selection of board games, jigsaws and toys available for use during your stay. These are in the side board in the dining room.

BEACH EQUIPMENT

There are buckets and spades, camping chairs, a wind break, picnic rugs and 2 body boards for the beach for you to borrow during your stay.

BABIES & PETS

We provide a wooden cot and highchair. There is also a retractable stair gate at the bottom of the stairs. Please use this to keep dogs downstairs.

DVDS

DVDs are kept in the chest under the TV in the living room.

BEFORE YOU GO

PLEASE



Please put all used towels in the bath or shower to indicate that they need washing.



Place all of the dishes in the dishwasher and start it.



If the barbeque was used, please use the brush and spray provided to clean it.



Empty and discard of any food items from the fridge and freezer.



Please empty the rubbish from the kitchen and bathrooms into the green bin (anything for recycling can go in the blue bin - bagless).



Replace any furniture that has been moved to its original placement.

CHECKOUT

CHECKLIST

1

PHONE CHARGERS

CHECK ALL SOCKETS

Please ensure you have removed all chargers.

2

DOOR HOOKS

CHECK BEHIND THE DOORS

Make sure no coats have been left hanging on the backs of doors.

3

HEATING

PLEASE TURN IT DOWN

Turn the heating down to 15 degrees. The cleaner will want it cool for working.

4

THE DOOR KEY

PLEASE LEAVE THE KEY

Please put the key back in the key safe.

5

PLEASE LOCK UP & CLOSE WINDOWS

CLOSE ALL WINDOWS

The cleaner might not be coming to clean for a few days after you leave, so please don't leave any doors unlocked or windows open, thank you.

6

FIRE AND OVEN

FINAL CHECK

Please double check that the fire, oven and hob are switched off, thank you.



PLEASE LEAVE US A
REVIEW ONLINE

We hope you had a wonderful time during your stay
with us! We would be grateful if you leave us a
review at
www.seafern.co.uk/reviews

Your feedback is extremely valuable to us.

Thank you very much!

THANK YOU

FOR STAYING



WE HOPE TO SEE YOU AGAIN SOON

Get in touch with us at:



07766041644 Jill



jill@seafern.co.uk



<https://www.facebook.com/seaferncottage>



Sea Fern
HOLIDAY RENTAL